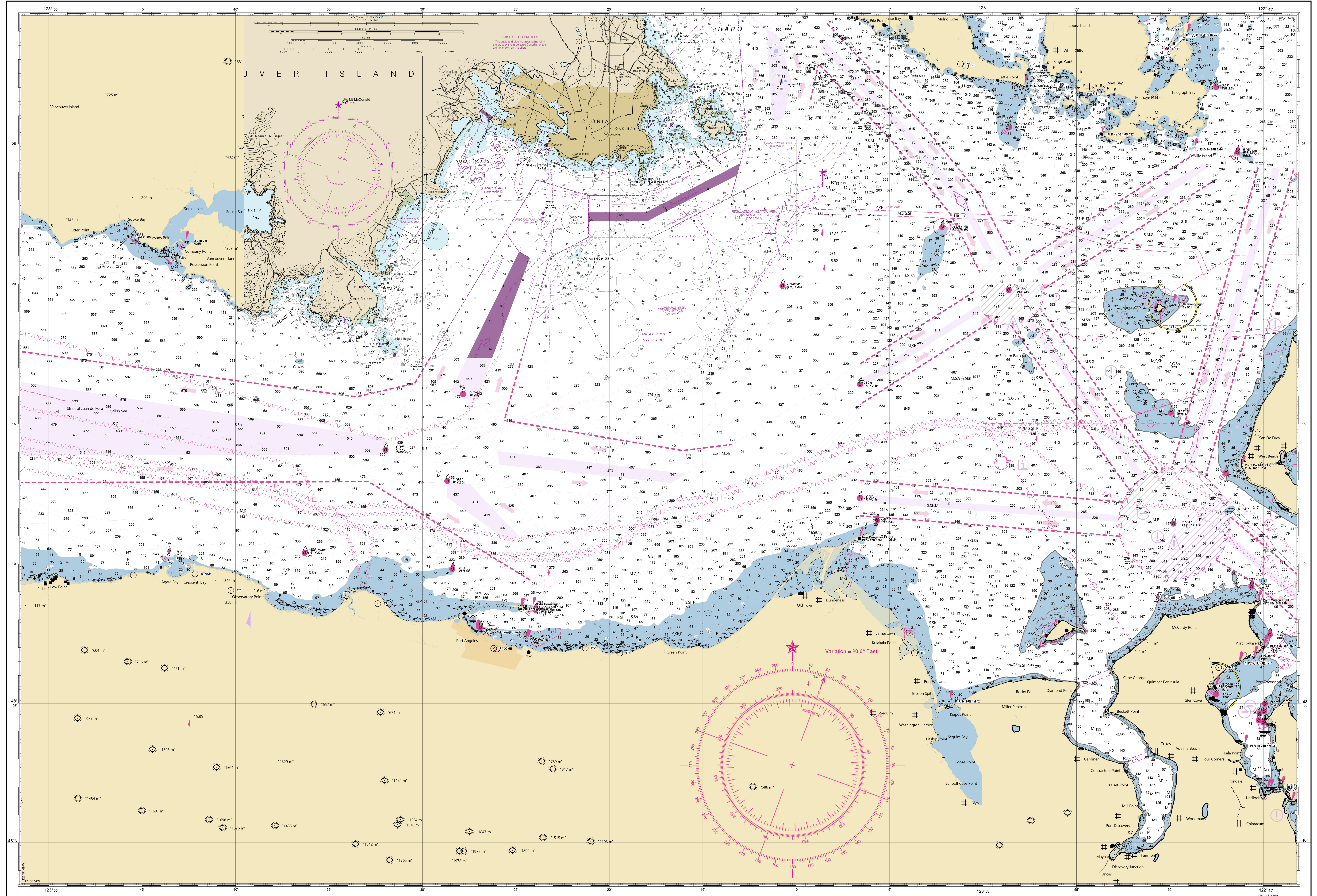


18465 Tr NCC (Canadian section replaced with 18465)



AUTOMATED CHART GENERATION
 This NOAA Custom Chart has been automatically generated from NOAA Electronic Nautical Chart (ENC) data. It is a digital reproduction of the ENC data and is not intended for use as a substitute for the original ENC data. The chart is intended for use as a reference only. The chart is not intended for use as a substitute for the original ENC data. The chart is not intended for use as a substitute for the original ENC data.

HEIGHTS
 Heights of fixed aids to navigation and vertical clearance of overhead obstructions will be shown in feet if the units are set to feet or fathoms. If units are set to meters, heights will be shown in meters. Land elevation values are shown in meters only.

CAUTION
 The plotted position will not only vary on any single aid to navigation, but also vary on any other aid to navigation. The plotted position will not only vary on any single aid to navigation, but also vary on any other aid to navigation. The plotted position will not only vary on any single aid to navigation, but also vary on any other aid to navigation.

CAUTION
 The NOAA Custom Chart contains up-to-date information only as of the time of creation, and will become outdated. Mariners are advised to verify information, and to consider a new NOAA Custom Chart when information is updated. Notices to Mariners are not issued for corrections to the NOAA Custom Chart.

REPORTS
 Report all spills of oil and hazardous substances to the National Response Center via 1-800-424-8802 (24 hrs), or to the nearest U.S. Coast Guard facility if telephone communication is impossible (24 hrs).

WATER LEVELS, CURRENTS AND TIDES
 Real-time water levels, tide predictions, and tidal current predictions are available on the Internet from NOAA Center for Operational Oceanographic Products and Services (CO-OPS) at <http://tidesandcurrents.noaa.gov>.

AUTHORITIES
 Hydrography and topography by the National Ocean Service, Coast Survey, with additional data from the Corps of Engineers, Geological Survey, U.S. Coast Guard and National Oceanic and Atmospheric Administration.

PROJECTION INFORMATION
 WGS 1984 World Mercator (Calculated)
 SCALE 1:8000 at Lat. 48°14.09'
 GCS WGS 1984

ADDS TO NAVIGATION
 Consult the U.S. Coast Guard Light List for supplemental information concerning aids to navigation.

CAUTION
 Temporary distress beacons in aids to navigation are not indicated on this chart. See Light List for more information. During winter months or when damaged by ice, beacons may be replaced by other types or removed. For details, see U.S. Coast Guard Light List.

RADAR REFLECTORS
 Radar reflectors have been placed on many floating aids to navigation. Individual radar reflector identification on these aids has been omitted from this chart.

CAUTION
 Limitations on the use of radio signals as aids to navigation can be found in the U.S. Coast Guard Light List and National Oceanic and Atmospheric Administration Publication 117. Radio direction finder bearings to commercial broadcasting stations are subject to error and should be used with caution.

UNITS IN FEET

UNITS IN FEET

UNITS IN FEET

UNITS IN FEET

UNITS IN FEET

UNITS IN FEET